

Nasdaq Green Designations

Required Environmental Information



Required environmental information and other data to be provided by companies for the ESG Data Portal at application and renewal of Nasdaq Green Designation

A. General Company Information

DATA ITEM	FIELD TYPE/UNIT
Company Name	Text
Contact Name	Text
Title	Text
E-Mail	Text
Phone Number	Numeric

Additional company and billing information to be provided by private companies

B. Listing Venue and Application Type

DATA ITEM	FIELD TYPE/UNIT
Primary Listing Venue	Tick box
Segment of the Exchange where listed	Tick box
If dual listed in the Nordics + which exchange (if any)	Y/N, Drop down list
Application Type	Tick box

C. Environmental Metrics

DATA ITEM	FIELD TYPE/UNIT
Greenhouse Gas Emissions, for Scope 1, Scope 2 and Scope 3	Numeric value
Does the company include internal carbon pricing within its operations?	Y/N + web link to policy
Does the company's GHG emission calculations follow the GHG Protocol?	Y/N
Scope 3 Emissions breakdown (activities included in Scope 3)	Tick box
Energy Mix - top 3 (renewable vs. non-renewable energy used)	Drop down list, % usage
Does the company publish and follow an environmental or sustainability policy?	Y/N + web link to policy
Environmental oversight of climate-related risks by board/management	Y/N
Environmental oversight of sustainability issues by board/management	Y/N

D. Corporate Governance Metrics

DATA ITEM	FIELD TYPE/UNIT
Are company executives formally incentivized to perform on ESG metrics?	Y/N + web link to policy
Are the company's vendors or suppliers required to follow a code of conduct?	Y/N + web link to policy
Does the company report physical and transition financial climate-related risks in accordance with the TCFD*?	Y/N + web link to info

* Task Force on Climate-related Financial Disclosures

E. Green Activity Metrics

Note: The company needs to fill out at least one green activity to be able to submit the application. If uncertainty regarding EU Taxonomy alignment interpretation, please populate the value using the most conservative approach.

Amounts to be populated in this section are used for the calculation of percentage values.

DATA ITEM	FIELD TYPE/UNIT
Amounts populated in this section are used for the calculation of percentage values only.	
Does the company have any environmental certifications?	Y/N, name, web link to info
% Turnover from fossil fuel activities	%
TOTALS	
Company Total Turnover	Amount
Company Total CAPEX	Amount
Company Total OPEX	Amount
TURNOVER	
Green turnover within each relevant activity eligible with the EU Taxonomy	Dropdown list, amount, Y/N
Green turnover within other relevant activities than those specified in the EU Taxonomy (Non-EU Taxonomy Eligible)	Dropdown list, amount, Y/N
Total turnover within each activity	Amount
Taxonomy-aligned proportion of turnover within each activity	% - automatic calculation
Taxonomy-aligned proportion of Total Turnover	% - automatic calculation
Total green proportion of turnover	% - automatic calculation
CAPEX	

DATA ITEM

Amounts populated in this section are used for the calculation of percentage values only.

FIELD TYPE/UNIT

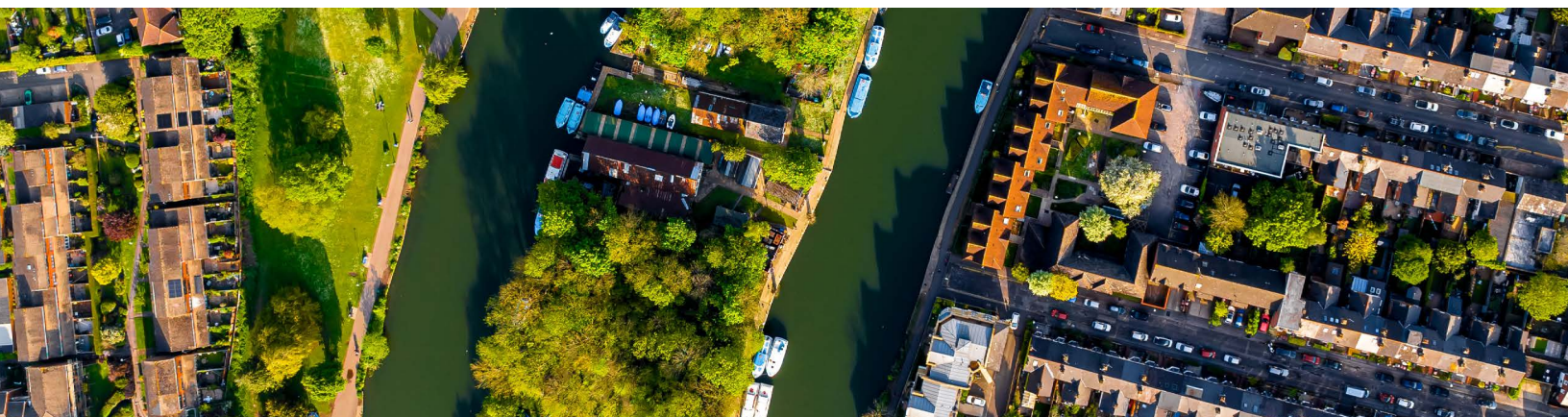
Green capital expenditure (CAPEX) within each relevant activity eligible with the EU Taxonomy	Dropdown list, amount, Y/N
Green CAPEX within other relevant activities than those specified in the EU Taxonomy (Non-EU Taxonomy Eligible)	Dropdown list, amount, Y/N
Total CAPEX within each activity	Amount
Taxonomy-aligned proportion of CAPEX within each activity	% - automatic calculation
Taxonomy-aligned proportion of Total CAPEX	% - automatic calculation
Total green proportion of CAPEX	% - automatic calculation
OPEX	
Green operating expense (OPEX) within each relevant activity eligible with the EU Taxonomy	Dropdown list, amount, Y/N
Green OPEX within other relevant activities than those specified in the EU Taxonomy (Non-EU Taxonomy Eligible)	Dropdown list, amount, Y/N
Total OPEX within each activity	Amount
Taxonomy-aligned proportion of OPEX within each activity	% - automatic calculation
Taxonomy-aligned proportion of Total OPEX	% - automatic calculation
Total green proportion of OPEX	% - automatic calculation
TOTAL GREEN INVESTMENTS	
Taxonomy-aligned proportion of Total Investments (CAPEX + OPEX)	% - automatic calculation
Total green proportion of Investments (CAPEX + OPEX)	% - automatic calculation

F. Future Sustainable Targets

DATA ITEM

FIELD TYPE/UNIT

Emission Reduction Target 1,2,3 (target/ baseline year/ target year/ scope covered/ accomplished/ intermediate target/ intermediate target year accomplished)	Y/N, % target, numeric value (baseline year/ target year), dropdown list (scope), Y/N (accomplished)
Paris Agreement Alignment Target	Y/N, web link to info
Net-Zero Emission Target and accomplishment	Y/N, web link to info Y/N (accomplished)
Science Based Target Initiative	Y/N, web link to info
Target on suppliers that have agreed to follow the company's Supplier Code of Conduct	Y/N, % target, target year



G. Green Designation Application/Renewal

DATA ITEM	FIELD TYPE/UNIT
Name of Approved Reviewer	Dropdown list
Has the non-financial information used for this application been assured by a third party?	Y/N, name of third party
Structural or other material changes have taken place in the company requiring a full assessment (at renewal)	Tick box (Y/N)
Upload the assessment report including a description of the methodology used by the reviewer	Web link to report
Upload Nasdaq undertaking document	PDF

Nasdaq reserves the right, in its sole discretion, to reject any application for a Nasdaq Green Designation. Nasdaq Green Designations are voluntary designations for companies listed on Nasdaq's Nordic markets and privately owned companies with European (EEA, the UK and Switzerland) domicile that want to increase visibility around their green business models and strategies. It is an informational service that describes companies that purport to be aligned with the Nasdaq Green Equity Principles. The Nasdaq Green Equity Principles are not listing requirements. Information about Nasdaq Green Designations and the designation of a company should not be construed as investment advice, either on behalf of a particular security or an overall investment strategy. Nasdaq does not independently investigate or verify any representations made by companies or third parties as to the companies' compliance with the Nasdaq Green Equity Principles and other standards or the accuracy, authenticity, completeness, or current nature of any the information that companies or third parties provide to Nasdaq about themselves. Neither Nasdaq, Inc. nor any of its affiliates makes any recommendation to buy or sell any security or any representation about the financial condition of any company. Actual results may differ materially from those expressed or implied. Past performance is not indicative of future results. Investors should undertake their own due diligence and carefully evaluate companies before investing. **ADVICE FROM A SECURITIES PROFESSIONAL IS STRONGLY ADVISED.**

© Copyright 2023, Nasdaq, Inc. All Rights Reserved. 3029-Q23