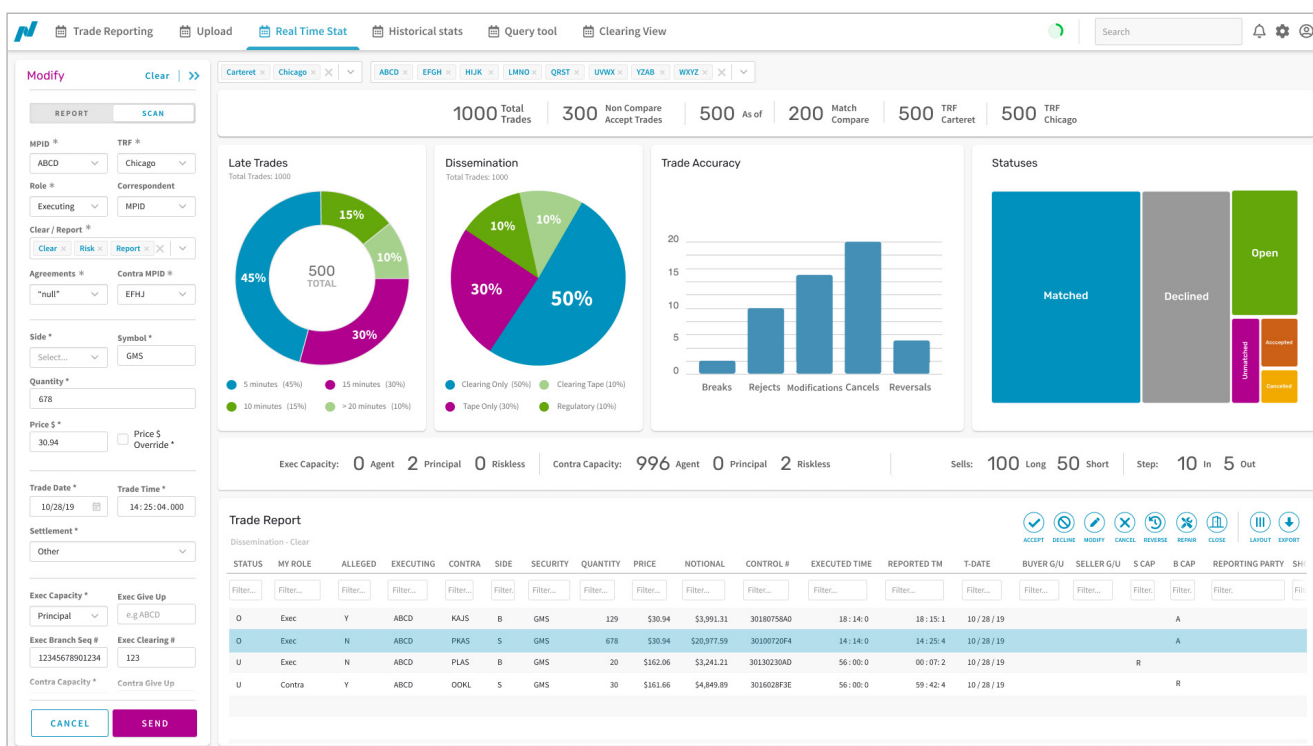


WorkX

Seamlessly enhance trading, reporting and risk assessment with WorkX

Nasdaq introduces the next generation of Workstation, WorkX, which provides upgraded trade reporting and monitoring tools on modern user interface and technology stack. With easy-to-use tools, WorkX delivers efficiency to users with enriched features and functionality.



Comprehensive Coverage:

- Consolidated coverage for your firm and across both FINRA/NasdaqTRFs (Carteret/Chicago)
- View multiple pieces of functionality on one screen
- Holistic scan enabling users to search across date ranges and multiple MPIDs

Ease of Use:

- Quick and easy modification and actioning of trade reports
- Streamlined upload tool to allow users to leverage templates, visualize progress/status, and fix errors

Enriched Functionality:

- Managerial reporting to identify operational efficiency/inefficiency
- Enhanced limit monitoring, including configurable action thresholds and netting
- Data visualization for quick compliance monitoring and operational effectiveness

Improved performance:

- Upgraded row limits for scanning and uploading
- Increased data query performance

Trade Reporting View

Trade Reporting
Upload
Real Time Stat
Historical stats
Query tool
Clearing View

Trade Clear | >>

REPORT SCAN

Date range
10/01/2019 - 10/28/2019

Control #
e.g. 12345678

Trade Status
Unmatched

Port / User
e.g. John Smith

MPID
ABCD

TRF
Carteret

Clear / Report
Select...

Role
Correspondent

Agreements
Contra MPID

Side
Symbol

Quantity
e.g. 10,000,000

Price \$
e.g. 1234.123456

Price \$ Override

SCAN

Scan Results
My Actionable Trades

STATUS	MY ROLE	ALLEGED	EXECUTING	CONTRA	SIDE	SECURITY	QUANTITY	PRICE	NOTIONAL	CONTROL #	EXECUTED TIME	REPORTED TM	T-DATE	BUYER G/U	SI
U	Exec	Y	ABCD	FGHI	B	GMS	129	\$30.94	\$3,991.31	30180758A0	18:14:0	18:15:1	10/28/19	JKLM	
U	Contra	N	ABCD	FGHI	S	GMS	678	\$30.94	\$20,977.99	30100720F4	14:14:0	14:25:4	10/28/19	JKLM	
U	Exec	N	ABCD	FGHI	B	ESLT	20	\$162.06	\$3,241.21	30130230A0	56:00:0	00:07:2	10/28/19		
U	Contra	Y	ABCD	FGHI	S	ESLT	30	\$161.66	\$4,849.89	3016028F3E	56:00:0	59:42:4	10/28/19		

STATS COMPLIANCE TRADER

Late Trades
Total Trades: 1000

Dissemination
Total Trades: 1000

Upload Tool

Trade Reporting
Upload
Real Time Stat
Historical stats
Query tool
Clearing View

Repair >>

MPID
ABCD

TRF
Chicago

Role *
Executing

Clear / Report *

Agreements *
"null"

Side *
Sell

Quantity *
Enter quantity

Price \$ *
\$38.96

Trade Date *
12/15/19

Trade Time *
13:35:45.010

Settlement *
Other

Exec Capacity *
Principal

Exec Branch Seq #
12345678901234

Contra Capacity *
Agency item

SEND

Upload List

FILE NAME	DATE	STARTED	ERRORS	TOTAL	PROGRESS
lvans_file_trades.xls	22/12/2022	9:50:46	4	200	<div style="width: 95%;"></div>
us_stock_nasdaq.csv	22/12/2022	9:50:46	450	450	<div style="width: 100%;"></div>
nyc_exchange_file.xls	22/12/2022	9:50:46	200	340	<div style="width: 59%;"></div>
nyc_exchange_file.xls	22/12/2022	9:50:46	3	450	<div style="width: 99%;"></div>
nyc_exchange_file.xls	22/12/2022	9:50:46	200	200	<div style="width: 100%;"></div>

ERRORS

ERROR MSG	SIDE	SYMBOL	QUANTITY	PRICE	EXEC MPID	CONTRA MPID	CONTROL #	TRADE DATE	TRADE TIME
Invalid Price	B	LEN	100	\$58.30	ABCD	EFGH	27770905D0	12/15/19	13:35:45.010
Missing Quantity	S	CSCO		\$38.96	ABCD	EFGH		12/15/19	13:35:45.010
Invalid 1112 Value	B	CROK	2,000	\$10.01	ABCD	HWYZ			

Trade Reporting

Late Trades
Total Trades: 500

Dissemination
Total Trades: 500